

MINING AND CONSTRUCTION TOOLS | HERRAMIENTAS PARA LA CONSTRUCCIÓN MINERA.



SALES | VENTAS:



CEL: 614 487 2583,



ventas@autojad.com,

AUTOJAD S.A. DE C.V.

TEL: 614 566 1105,

www.autojad.com

MINING AND CONSTRUCTION TOOLS.

Jackleg Drills



Jackleg Drills																
Model	Weight		Length		Air Consumption		Piston Dia		Stroke Length		Shank Size		Working Pressure		Blows per minute	
	Kg	lb	mm	inch	l/s	cfm	mm	inch	mm	inch	mm	inch	Bar	psi		
G250	41.3	91	709	27 9/10"	74	156	79.4	3 1/8"	68	2 5/8"	22 x 108	7/8 x 4 1/4"	6.2	90	2200	
G83F	32.4	72	655	27 1/4"	52	110	76	3"	64	2.5"	22 x 108	7/8 x 4 1/4"	6.2	90	2200	
G94W	28	62	670	26 3/8"	97	206	90	3 17/32"	45	1 3/4"	22 x 108	7/8 x 4 1/4"	6	87	3300	
G16W	28.5	63	705	27 3/4"	69	146	70	2 5/32"	55	2 3/4"	22 x 108	7/8 x 4 1/4"	6	87	2340	
G656W	22	48.5	658	25 7/8"	48	102	65	2 17/32"	59	2 5/16"	22 x 108	7/8 x 4 1/4"	6	87	2040	

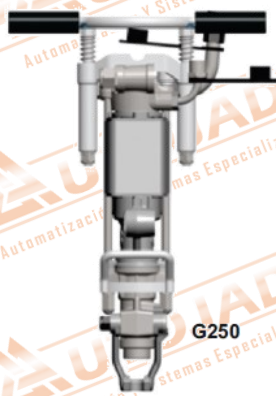
Stoper Drills



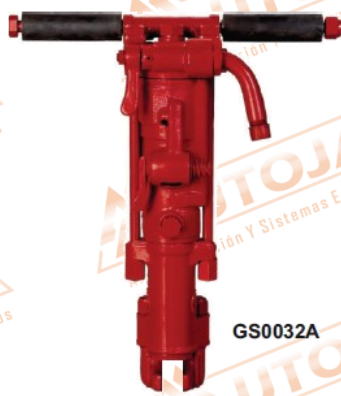
Stoper Drill																
Model	Weight		Length		Air Consumption		Piston Dia		Stroke Length		Shank Size		Working Pressure		Blows per minute	
	Kg	lb	mm	inch	l/s	cfm	mm	inch	mm	inch	mm	inch	Bar	psi		
GT250	48.5	101	787	31"	85	180	79.4	3.125"	67.7mm	2.625"	22x108	7/8 x 4 1/4"	6.2	90	2200	

MINING AND CONSTRUCTION TOOLS.

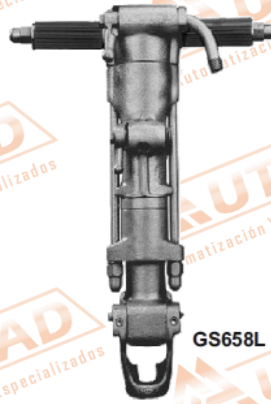
Sinker Drills



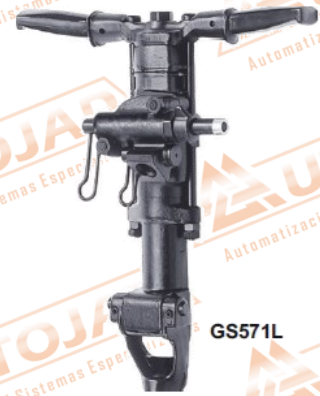
GS250



GS0032A



GS658L



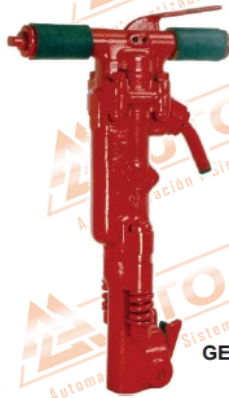
GS571L

Sinker Drills															
Model	Weight		Length		Air Consumption		Piston Dia		Stroke Length		Shank Size		Working Pressure		Blows per minute
	Kg	lb	mm	inch	l/s	cfm	mm	inch	mm	inch	mm	inch	Bar	psi	
GS250	36.8	81	709	27 9/10"	85	180	79.4	3 1/8"	68	2 5/8"	22 X 108	7/8 X 4 1/4"	6.2	90	2300
GS0032A	24.5	54	560	22"	48	102	67	2 5/8"	51	2 1/64"	22 X 108	7/8 X 4 1/4"	6	87	2100
GS658L	24	53	565	22 7/32"	58	123	65	2 17/32"	59	2 5/16"	22 X 108	7/8 X 4 1/4"	6	87	2040
GS571L	18	40	510	20 1/16"	39	83	55	2 5/32"	60	2 11/32"	22 X 108	7/8 X 4 1/4"	6	87	2100

Pavement Breakers



GEX1210



GEX1230



GEX1240



GEX117

Pavement Breakers										
Model	Weight		Length		Air Consumption		Shank Size		Blows per minute	
	Kg	lb	mm	inch	l/s	cfm	mm	inch		
GEX1210	20	44	540	21"	26.5	56.15	25 x 108	1" x 4 1/4"	1400	
GEX1230	29.5	65	680	26 3/4"	32	68	32 x 160	1 1/4" x 6"	1300	
GEX1240	37.5	83	735	29"	40	85	32 x 160	1 1/4" x 6"	1150	
GEX117	35	77	740	29 1/4"	35	75	32 x 160	1 1/4" x 6"		

MINING AND CONSTRUCTION TOOLS.

Air line Accesories



GL30



GL50

Lubricators for Jackleg / Stoper / Sinker Drills

Model	Air Flow		Working Pressure		Oil Volume		Weight		Hose Diameter	
	l/sec	cfm	bar	Psi	Ltr	Pint	kg	lb	mm	in
GL30	15-140	32-300	20	290	1.3	2.75	3	6.6	25	1
GL50	35-212	75-450	17.2	250	0.71	1.5	5.22	11.5	31.75	1 1/4

Claw & Coupling



Pneumatic Breaker Accessories



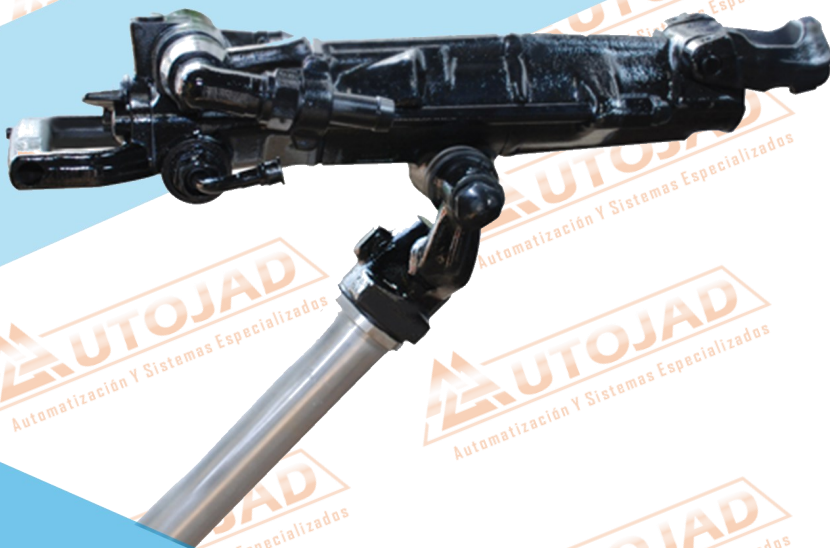
Rock Drilling Tools



MINING AND CONSTRUCTION TOOLS.

G250

Specification	Metric (Imperial)
Weight	41.3 Kg (91 lb)
Shank Size	22 x 108 mm (7/8" x 4 1/4")
Length	709 mm (27 7/8")
Air Consumption @ 6 bar	74 l/s (156 cfm)
Piston Dia	79.4 mm (3 1/8")
Stroke Length	68 mm (2 3/4")
Blows per minute	2200



G16W

Specification	Metric (Imperial)
Weight	28.5 Kg (63 lb)
Shank Size	22 x 108 mm (7/8" x 4 1/4")
Length	705 mm (27 3/4")
Air Consumption @ 6 Bar	69 l/s (146 cfm)
Blows per minute	2340 (2340)
Piston Dia	70 mm (2 3/4")
Stroke Length	55 mm (2 1/8")
Largest reaming diameter	76 mm (2 3/4")
Hole Dia	27 - 41 mm (1 - 1.6")
Suitable Pusher Leg	MMT 51

MINING AND CONSTRUCTION TOOLS.

G16W Jackleg Drill

G16W pusher leg mounted rock drills are designed for driving drifts and tunnels with a small cross section. These well-proven rock drills are recognized for their high performance and reliability. They are intended for use for hole diameter range of 27 to 41 mm with H22 rotation chuck. It has a robust rifle bar rotation with large sliding surfaces, which has contributed to its reputation as a durable dependable drill. It is easy handled in collaring due to the location of the single air inlet, located at the same side as the main control. Also the pusher leg control is located at the back head of the rock drill.

Key Features

- Suitable for most drilling applications in medium to hard rock.
- Long stroke & good penetration rate
- Robust rifle bar rotation mechanism
- Pusher leg control placed in back head of the rock drill



SPECIFICATION

G16W Jackleg Drill		
	Metric	Imperial
Part No	G16W	
Weight	28.5 Kg	63 lb
Length	705 mm	27 3/4"
Air Consumption	69 l/s	146 cfm
Blows per minute	2340	2340
Piston Dia	70 mm	2 3/4"
Stroke Length	55 mm	2 5/32"
Largest reaming diameter	76 mm	2 31/32"
Hole Dia	27 - 41 mm	1 - 1.6"
Shank Size	22 x 108 mm	7/8 x 4 1/4"
Optional Shank Size	25 X 108 mm	1 X 4 1/4"
Working Pressure	6 Bar	-
Suitable Pusher Leg	MMT 51	-

MINING AND CONSTRUCTION TOOLS.

G120F Drifter

G120F is a popular all-round machine with a high reputation of economy and reliability suitable for both underground and surface work capable for multiple applications of drifting, tunneling, bench drilling and production drilling.

The powerful G120F has a moderate weight and this facilities manual handling of the unit which can be mounted on simple and light rigging structures intended to operate with remote control. G120F drill has reversible rotation, which can also be disengaged so that only the impact mechanism works. Air or water flushing of drill cuttings is possible, and all drill functions are operated from a remote control unit.

Key Features

- Multipurpose long-hole drill suitable for both underground and surface works
- Can be mounted on simple and light rigging structure
- Reversible rotation with disengaging feature with only impact mechanism
- Parts interchangeable with Atlas Copco BBC120F
- Easy to dismantle and service with low maintenance cost.

G120F is a pneumatic rock drill intends for use on drill rigs in the following areas:

Underground Mining	Long Hole Drilling
Surface Quarrying	Bench Drilling
Construction	Grout Hold Drilling
Metallurgical Industry	Top Hole Drilling Furnaces



Specification

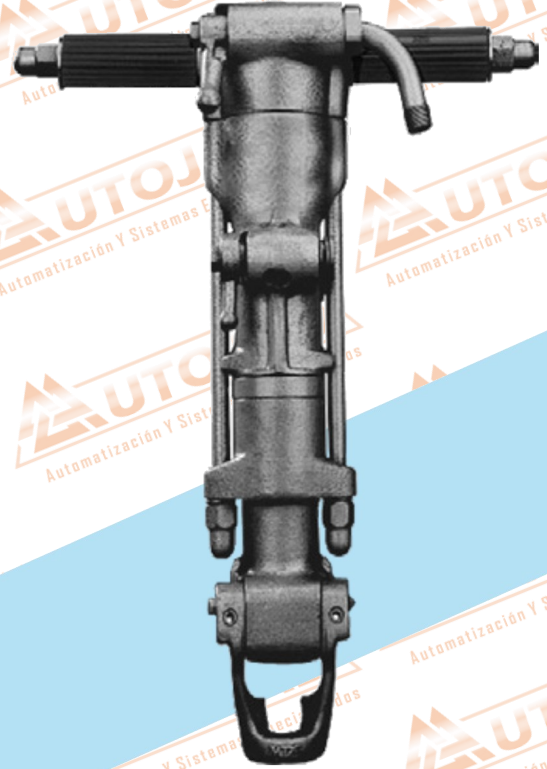
	G120F	
	Metric	Imperial
Weight	70 kg	152 lb
Length	780 mm	31"
Air Consumption	167 l/s	354 cfm
Blows per minute	2100	2100
Piston Dia	120 mm	4.72"
Stroke Length	65 mm	2.56"
Hole Dia	48-89 mm	13/8 - 3"
Rotation Speed	180 rpm	
Working Pressure	6 Bar	
Adopter Type	R32, R38, T38	

MINING AND CONSTRUCTION TOOLS.

Sinker Drill & Lubricator

G658L

Specification	Metric (Imperial)
Weight	26 Kg (57 lb)
Shank Size	22 x 108 mm (7/8" x 4 1/4")
Length	565 mm (22.732")
Air Consumption @ 6 bar	58 l/s (123 cfm)
Piston Dia	65 mm (2.17/32")
Stroke Length	59 mm (2.5/32")
Blows per minute	2040



GL30

Specification	Metric (Imperial)
Weight	2.6 kg (6 lb)
Oil Volume	1.3 ltr (43 fl.oz.)
Air Flow	25-130 l/s (53-275 cfm)
Hose Diameter	25 mm (1")
Max Working Pressure	20 Bar (290 psi)

MINING AND CONSTRUCTION TOOLS.

GEX09P Pick Hammer

GEX09P pick hammer is definitely one of the most versatile pneumatic equipment in the market today. It is used in a wide range of applications, ranging from soft/medium material like brick to tough concrete. The cylinder has an air cushioning system on either side of the piston to eliminate metal to metal impact, hence increasing drill life and reducing piston impact transmissibility to the operator. The drill has a two-step trigger to help with chisel point location and is especially helpful for the first critical cuts. The kick latch retainer combined with its lightweight design assists the operators to perform quick & easy tool change.

Key Features

- Can be used in a range of applications, from soft/medium material like brick to hard material like concrete.
- Air cushioning system in the cylinder to eliminate metal to metal impact, hence increasing drill life and reducing drill vibration.
- Two-step trigger to set chisel point location accurately
- Kick latch retainer for quick & easy tool change
- Lightweight design



SPECIFICATION

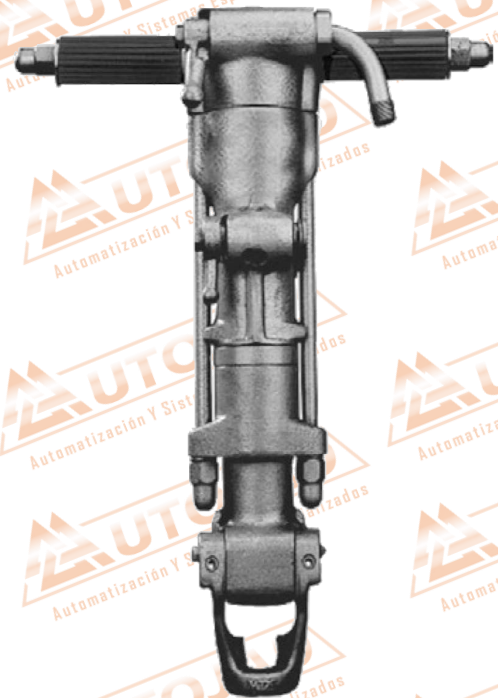
	Metric	Imperial
Length	500 mm	20"
Weight	12 kg	26 lb
Air Consumption	18.5 l/s	39 cfm
Sank Size	22 mm x 82 mm	7/8" X 3 1/4 "
Impact Rate	1800 BPM	

MINING AND CONSTRUCTION TOOLS.

GS658L Sinker Drill

GS658L air flushed sinker drills are used for general construction, utility work and plant maintenance. Designed for drilling through granite, hard faced rock, quarry drilling, bench drilling and drilling secondary holes for blasting. These are capable of drilling 27-40 mm diameter holes with H22 integral/extension steels up to depth of 6 meter at higher drilling rate.

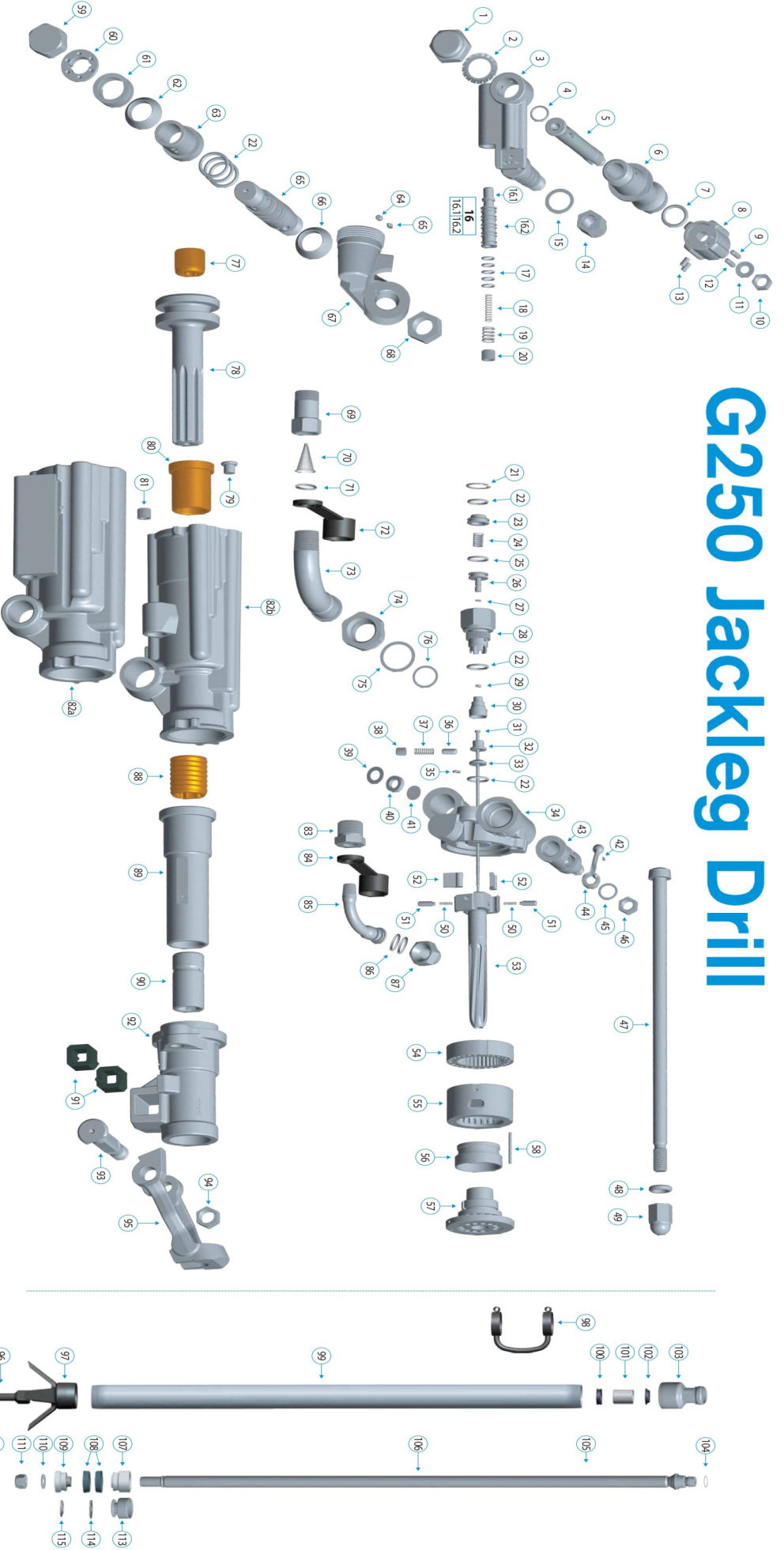
- High Torque
- Low weight
- Large sliding face
- Long stroke machine
- Very reliable and resistant to wear
- Good penetration in hard and soft rock
- Forged steel housings withstand rugged use
- Low spare parts consumption
- Robust kick-latch type retainers
- Blower for deep hole cleaning
- High impact energy



Specification

Weight		Length		Air Consumption		Piston Dia		Stroke Length		Piston Diameter		Working Pressure		Blows per minute
Kg	lb	mm	inch	l/s	cfm	mm	inch	mm	inch	mm	inch	Bar	Psi	
26	57	565	22.732"	58	123	65	2.17/32"	59	2.5/16"	65	2.17/32"	6	87	2040

G250 Jackleg Drill



Sl. Part No.	Ref. Part No.	Description	Qty	Sl. Part No.	Ref. Part No.	Description	Qty	Sl. Part No.	Ref. Part No.	Description	Qty	Sl. Part No.	Ref. Part No.	Description	Qty	Sl. Part No.	Ref. Part No.	Description	Qty
1	G568939	DBZT	1	25	G560124	146311 (146319)	1	52	G568927	B6177	1	77	G569162	C1398	1	96	G560434	C191	1
2	G5601953	146310	1	26	G564444	C1292C1	1	53	G564616	805238 (1718)	4	78	G560543	B234	1	97	G560462	C191	1
3	G5603917	A6979	1	27	G560119	146311 (146310)	1	54	G5601822	81710	1	79	G5604012	D1315 801001091	1	98	G560235	B1381 (1383004)	1
4	G5603224	146301 (146811)	8	28	G562922	818194	1	55	G560068	A45	1	80	G5602824	C1317	1	99	G560498	C1794	1
5	G5649022	811888	1	29	G5649827	D1973	1	56	G5605972	C148	1	81	G5600899	306389	1	100	G5604801	C1794	1
6	G5601922	811888	1	30	G5605523	C144	1	57	G5600538	A14	1	82	G5600899	306389	4	99c	G5604801	C1794	1
7	G5600925	146811	1	31	G5604218	C1344	1	58	G5609147	S178	1	83	G5600899	306389	1	100	G5601680	D1935A4	1
8	G5600922	300822	1	32	G5601864	D1675	1	59	G5600449	C1327	1	84	G5600939	133555 (D2441)	1	101	G5601680	D1935A4	1
9	G5605972	12181F	2	33	G5601866	D1675	1	60	G560162	C1319	1	85	G5604626	C1817W	1	102	G5602765	192554	1
10	G5601922	146322MF	1	34	G5604430	A660	1	61	G5601144	C1371	1	86	G5604378	34067378	1	103	G5607932	B1327	1
11	G5600922	3088	1	35	G5603122	146701	1	62	G5600144	D1392	1	87	G5602034	146811	1	104	G5604378	B181A	1
12	G5600922	3088	2	36	G5604006	D1383	1	63	G560462	D1323	1	88	G5602034	146811	2	105	G5604378	B181A	1
13	G5600922	3088	2	37	G5600897	2429	1	64	G5607352	D1326	1	89	G5602034	146811	1	106	G5607932	B189	1
14	G5600922	3088	2	38	G5600897	2429	1	65	G5603922	D1324	1	90	G5609822	C1312	1	107	G5607172	B304	1
15	G5600922	3088	2	39	G5603545	D1402	1	66	G5604938	3066	1	91	G5609822	C1312	1	108	G5604938	B304	1
16	G5600922	3088	2	40	G5603545	D1402	1	67	G5601147	D1398	1	92	G5609822	C1312	1	109	G5604938	B304	1
17	G5600922	3088	2	41	G5604380	D1322	1	68	G5601147	D1398	1	93	G5609822	C1312	1	110	G5604938	B304	1
18	G5601922	D1462	1	42	G5602935	D1394	1	69	G5609108	D1368	1	94	G5609108	D1368	1	111	G5604938	B304	1
19	G5601922	D1462	1	43	G5601645	81736	1	70	G5605078	D1368	1	95	G5609108	D1368	1	112	G5604938	B304	1
20	G5601922	D1462	1	44	G5601645	81736	1	71	G5605078	D1368	1	96	G5609108	D1368	1	113	G5604938	B304	1
21	G5601922	D1462	1	45	G5601922	146310MF	1	72	G560462	D1326	1	97	G5609108	D1368	1	114	G5604938	B304	1
22	G5601922	D1462	1	46	G5602937	D1383	1	73	G560462	D1326	1	98	G5609108	D1368	1	115	G5604938	B304	1
23	G5601922	D1462	1	47	G5601831	C132C	1	74	G5601903	D1388	2	99	G5609108	D1368	1				
24	G5601922	D1462	1	48	G5601903	D1388	2	75	G56007172	D1601	1	100	G5609108	D1368	1				
				51	G560462	C1314	4	76	G5600823	146311 (1468114)	1	97	G560462	C191	1				

* Fast Moving Parts / # Optional